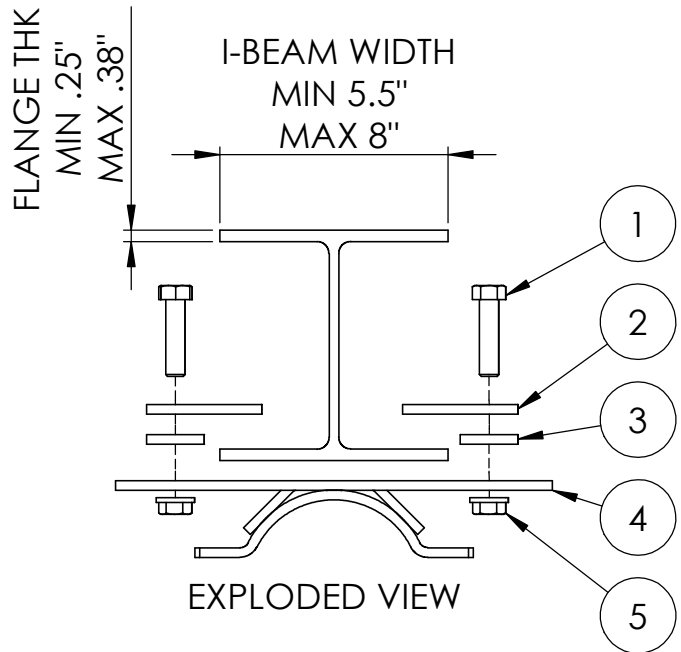
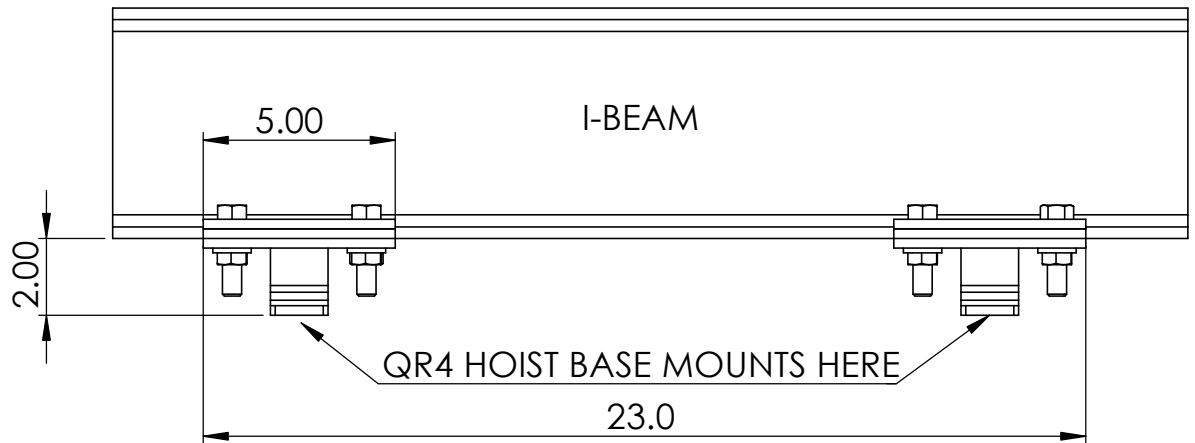
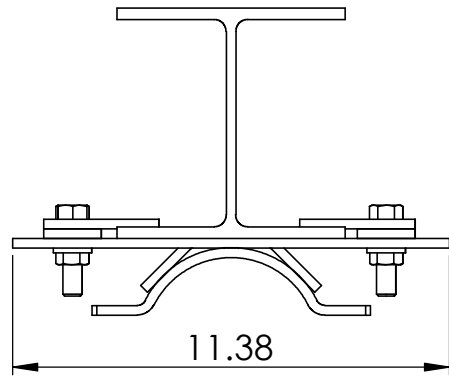


REVISIONS			
REV.	DESCRIPTION	DATE	APPROVED
A	INITIAL RELEASE	5/11/2021	TJ



NOTES:

- BRACKET ACCEPTS I-BEAMS FROM 5.5" WIDE TO 8" WIDE WITH FLANGE THICKNESS FROM .25" TO .38"
- TWO BRACKETS ARE USED FOR EACH HOIST

ITEM NO.	PROVIDED HARDWARE	PART NUMBER	QUANTITY
1	BOLT 1/2-13 X1.25"	BOLT-1/2-014	8
2	TOP BRACKET	BRACKET-IBEAM-TOP-L	4
3	SPACER	BRACKET-IBEAM-TOP-S	4
4	I-BEAM BRACKET		2
5	FLANGE NUT 1/2-13	NUT-LOCK-020	8

FILENAME: T:\Engineering\Winches\Mounting options\I Beam Clamps\QR I-Beam Clamp Assembly For Customer - RevA

EPICOR PART BARCODE:



LR
DYNAMICS
1949 S. 4250 W. Suite B
Salt Lake City, UT. 84104
801-486-8104
(FAX 801-486-8106)

MATERIAL: -	UNLESS OTHERWISE SPECIFIED DIMENSIONS ARE IN INCHES TOLERANCES ARE:			NAME	DATE	TITLE: QR I-Beam Clamp Assembly For Customer - RevA		
FINISH: POWDER COAT BLACK	FRACTIONAL ± 1/32	DECIMALS .XX ± .01 .XXX ± .005	ANGLES ± 1°	DRAWN		SIZE A	PART NO. SET-BRKT-IB-QR	REV A
DO NOT SCALE DRAWING				CHECKED		SCALE: 1:5		SHEET 1 OF 1
				Q.A.				

ALL RIGHTS RESERVED - LR DYNAMICS - INFORMATION IN THIS DOCUMENT IS CONFIDENTIAL AND IS THE SOLE PROPERTY OF LR DYNAMICS. ANY REPRODUCTION IN PART OR IN WHOLE, OR DELIVERY OF THIS DOCUMENT OR ANY COPY THEREOF OR DISCLOSURE OF SUCH INFORMATION TO UNAUTHORIZED PERSONS IS PROHIBITED.